

SILVIES®

Simply Amazing
Golf





Four New Award-Winning Courses You Can Enjoy!

An incomparable golf experience for players of every skill level, with 4 courses designed and built by Dan Hixson, and maintained by Sean Hoolehan — past president of the Golf Course Superintendents Association of America.

The reversible Hankins and Craddock Courses, both 18-hole championship courses, ranked in Golfweek's top 50 courses in the U.S. McVeigh's Gauntlet is a stunning 7-hole razor ridge challenge course, and Chief Egan is a fun, mountain meadow 9-hole par 3 course. The four courses are built on 600 acres of the high desert ponderosa pine forest and mountain meadows and are the highest elevation courses (5,000 feet) in Oregon.

A "must play", the 18-hole courses were the first reversible championship courses built in the world in over 450 years (since the Old Course at St. Andrews in 1552). This is how courses were meant to be designed and played — come see for yourself! The course direction is reversed each day to create a different layout with a variety of pin placements and tee box options, creating the opportunity for thousands of unique rounds. While the course is free of water hazards, there are over one hundred bunkers incorporated into the course design. The links style play is designed to be fun — and it's so quiet you can hear your heart beat!



Award-Winning Golf & Resort

We are honored to receive such positive acclaim by golf publications, industry professionals and golf raters, even before being open for a full year. However, the award we value the most comes from our guests who gave Silvies an incredible average rating of 4.5 stars out of 5 on popular review websites: Yelp, Google, Yahoo, TripAdvisor and GolfAdvisor.



Easy To Get To:

A beautiful 3 hour drive from Boise.
An easy 2.5 hour drive from Bend.
A fun 4.5 hour drive from Portland.

And...it's worth the drive!



Hankins #1



Hankins Course

18-Hole Championship Course • Links Style • Played Odd # Days • 7075 Yards

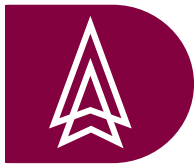
Named for the pioneering Hankins clan who homesteaded much of the ranch, Hankins provides an unforgettable perspective to the natural landscape and elevations — at 5,000 feet “in the desert” — that highlights the playing experience and gives you long drives. Hankins No. 18 is known as the “Hixson Hole,” as it gives you 12 legal golf advantages to ensure you will “nail it” off the tee and send the ball on the longest drive of your life. And if you do, your reward awaits you in Egan’s Hideout when your round is complete. The course direction is reversed each day to create a different layout with a variety of pin placements and tee box options, creating thousands of unique rounds. The course was voted Best New Course In the U.S. by Golf Digest (#4) and Best Resort Course by Golfweek (#25).

1.	PAR 4 • 415 • 370 • 335
2.	PAR 3 • 150 • 150 • 105
3.	PAR 3 • 150 • 150 • 105
4.	PAR 4 • 370 • 325 • 305
5.	PAR 5 • 550 • 490 • 420
6.	PAR 4 • 465 • 425 • 365
7.	PAR 3 • 200 • 175 • 125
8.	PAR 4 • 410 • 385 • 320
9.	PAR 4 • 500 • 405 • 360
10.	PAR 4 • 445 • 385 • 330
11.	PAR 4 • 305 • 285 • 270
12.	PAR 4 • 445 • 405 • 325
13.	PAR 3 • 140 • 115 • 105
14.	PAR 5 • 505 • 490 • 385
15.	PAR 3 • 175 • 145 • 90
16.	PAR 4 • 490 • 450 • 405
17.	PAR 4 • 330 • 305 • 270
18.	PAR 5 • 590 • 505 • 440





Chief Egan #8



Chief Egan Course

9-Hole Family Course • 875 Yards • Goat Caddies Available

Named for Chief Egan, the last War Chief of the Paiute Tribe who last engaged the U.S. Calvary in 1882. This location on Paiute Creek is believed to be close to Egan's last camp. Most agree that he (and the Calvary) would have been better off here, sipping a Silvie's "Horseshoe Nail" cocktail and making friends, as we invite you to do today. In alignment with our environmental sustainability ethic, Egan's Hideout (our clubhouse) is completely off the electrical grid, powered by roof-mounted solar panels, and fed water from Paiute Spring.



Egan's Hideout



1.	PAR 3 • 70 YARDS
2.	PAR 3 • 100 YARDS
3.	PAR 4 • 95 YARDS
4.	PAR 3 • 120 YARDS
5.	PAR 3 • 110 YARDS
6.	PAR 4 • 90 YARDS
7.	PAR 3 • 105 YARDS
8.	PAR 3 • 85 YARDS
9.	PAR 3 • 100 YARDS



McVeigh's #2



Dan Hixson

Tygh Campbell

Akbar Chisti

Bruce LeGoat

Mike LeChevon

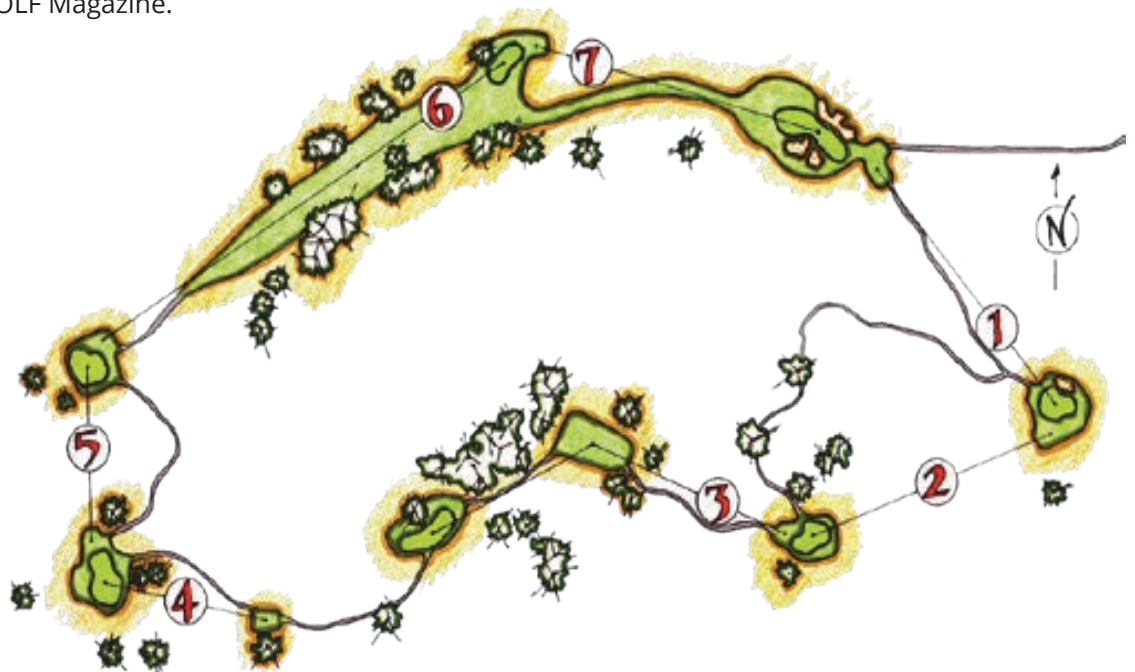


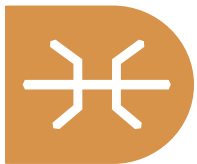
McVeigh's Gauntlet

7-Hole Challenge Course • 1177 Yards • Bonus Par 2 Hole • Goat Caddies Available

McVeigh's Gauntlet is named for Myles McVeigh, a pioneer to the area from Scotland, known to drink "a little" whiskey with the Craddock and Hankins boys, and with Charlie Owens (rumored to be his moonshining partner.) He settled where the course is now and was also rumored to play a little golf while drinking his "rye." McVeigh's Gauntlet, a challenge course for you and your friends, also features the now world-famous Goat Caddies — who really know the course, work for peanuts, and are known to never give any 'baaad' advice. McVeigh was named Best New Golf Experience in the U.S. by GOLF Magazine.

1.	Par 3 • 147 Yards
2.	Par 3 • 157 Yards
3.	Par 4 • 197 Yards
BNS	Par 2 • 47 Yards
4.	Par 3 • 97 Yards
5.	Par 3 • 97 Yards
6.	Par 4 • 277 Yards
7.	Par 3 • 157 Yards





Craddock Course

18-Hole Championship Course • Links Style • Played Even # Days • 7035 Yards

Named for the Craddock family — Jake Craddock and his four sons — who originally settled much of the ranch and helped consolidate it from over 70 little ranches into the ranch you experience today. They raised cattle, horses and hogs. Craddock's championship 18-hole layout traverses the ridges and valleys that overlook the north end of Silvies Valley. The course was voted Best New Course In the U.S. by Golf Digest (#3) and Best Resort Course by Golfweek (#32).

1.	PAR 5 • 555 • 490 • 455
2.	PAR 4 • 355 • 345 • 330
3.	PAR 4 • 475 • 425 • 390
4.	PAR 3 • 125 • 120 • 110
5.	PAR 4 • 520 • 470 • 410
6.	PAR 4 • 405 • 380 • 345
7.	PAR 3 • 260 • 225 • 200
8.	PAR 4 • 445 • 420 • 350
9.	PAR 4 • 495 • 425 • 350
10.	PAR 3 • 205 • 160 • 120
11.	PAR 4 • 445 • 385 • 320
12.	PAR 3 • 190 • 155 • 135
13.	PAR 5 • 550 • 520 • 475
14.	PAR 5 • 570 • 530 • 445
15.	PAR 4 • 315 • 290 • 275
16.	PAR 4 • 410 • 365 • 290
17.	PAR 4 • 490 • 420 • 365
18.	PAR 4 • 360 • 325 • 290





Relaxing at Otter Pond — there is more to Silvies than just the best new golf experience of your life.

Many Different Room Options For Singles, Couples & Groups

Luxury Log Cabins

Silvies' lakeside log cabins have two bedrooms with king size beds and can be divided into separate one bedroom units. The cabins sport an in-room wine cooler, stone floors, a comfy living room, hot tub and fabulous views. Located just down the boardwalk from the Lodge, they're plush with western décor, including operable skylights, copper sinks, rain showers, large flat-screen TVs and a fireplace.



Log cabin homes away from home



Ranch house room with one or two king beds

Ranch House Guest Rooms

Spacious and well-appointed, these single and double-king rooms each have their own entry for a fast escape to the golf course, the spa, or your next ranch adventure.

Each room is very comfortable, decorated with ranch art, and includes leather furniture, a rain shower, large flat-screen TVs, and a stocked mini-bar.



Exchanging stories over supper at the Lodge Ranch Table

Did Somebody Say, "Scotch?"

You'll be our guest on a huge, storied cattle ranch that 4500 cattle, 3000 goats, horses, numerous cowboys and ranch hands call home. The gourmet kitchen serves our best certified organic, grass-finished beef and chevon, featured nightly, together with ranch-grown herbs and local Oregon-sourced vegetables. At the Ranch Table, you will have supper with other guests and ranch hands, where you can share the day's events with old buddies and make new friends.

Culinary options at the ranch include: The Dining Room in The Lodge, The Posse's Den (for private dining), Egan's Hideout, boxed lunches, picnics, and our authentic chuck wagon. You can sample from our collection of over 110 different scotches and 50 other whiskeys, and from our extensive wine list.



Locally sourced



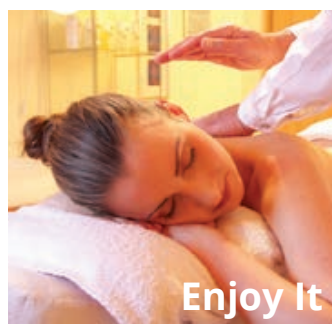
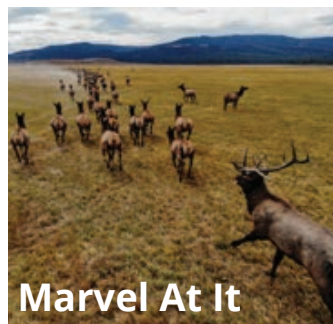
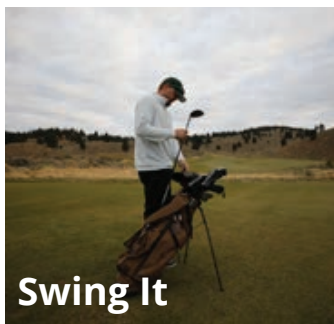
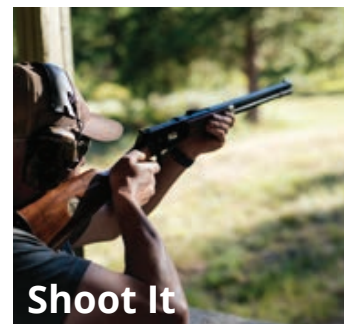
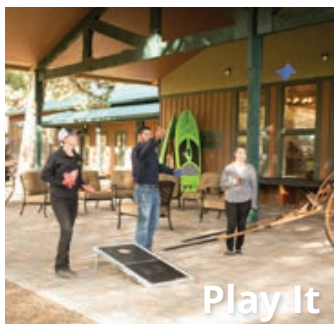
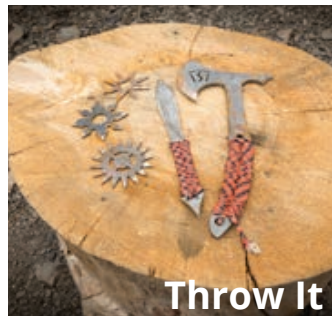
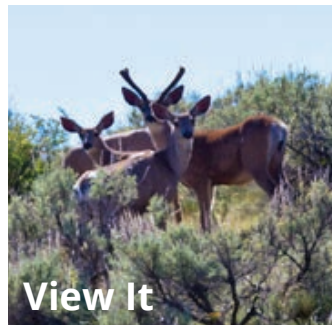
Ranch to table

We serve "Ranch to Table Blue Mountain Gourmet Cuisine" and, being a cattle and goat ranch, red meat dominates our menu. All bread is sourdough, made on the ranch from a 100-year-old family starter. We are also very good at vegetarian (in fact, all our cows are vegans), and are happy to accommodate other special needs with delicious options when notified in advance.

There's More To Silvies Than "Just" The Best Golf Trip Of Your Life

Test your aim at one of our shooting ranges, hike and bike the high trails, cast your line into one of our ponds or streams, taste over 100 different scotches, soak in a prairie schooner sized hot tub, ride a real ranch horse or explore the whole place on a Polaris razor with your very own ranger — Silvies has an abundance of once-in-a-lifetime experiences.

Silvies is for you.



Reservation Information

Included or Not:

We have both all-inclusive and à la carte ranch adventures. Our Ranch Adventure Specialist will help you figure out what's best for you and your party. Your ranch adventure will include all accommodations at The Retreat per itinerary or similar; all meals when indicated as included; airport transportation, limo service or other transportation to and from The Retreat where indicated as included; excursions off ranch property for fishing, hiking or sightseeing where indicated as included; use of sports equipment such as canoes, paddleboards, life vests, fishing poles, binoculars, range finders, golf clubs, rifles, pistols, helmets, snowshoes, skis, as well as tips, taxes and service charges where indicated as included; any or all ranch based activities including but not limited to golf, shooting, Razor tours, walking tours, hiking, bicycling, horseback riding, spa services, rock climbing, as well as tips, taxes and service charges where indicated as included; use of our exercise and fitness facility including lap pool, hot tubs, saunas; our onsite games and activities including driving range, pool, shuffleboard, horseshoes, roping and others too numerous to name; and the services of our Retreat, Links & Spa management staff are all included.



Not Included:

Air travel (except where shown as included), extensions, upgrades, optional activities on ranch and off, use of equipment, passport, visa, and immigration fees, meals not indicated as included, travel protection plans, items of a personal nature such as alcohol, cigars, retail items and laundry.

Airfares and Transfers

For all programs, airfare is an additional cost unless otherwise noted. We will gladly assist you in making your air arrangements for a \$50 per person service fee. Transfers between Silvies Field and The Retreat and between The Links and The Retreat are routinely provided at no cost.

Reservations:

To reserve your Ranch Adventure, an advance payment is required at the time of

the reservation. The advance payment amount varies by program. Payment is accepted by Visa, MasterCard, American Express, Discover or by check (we accept cash or gold too!) Receipt of your initial payment indicates your acceptance of our complete Terms and Conditions. We require written notice at the time of reservation for any physical condition, diet, or treatment requiring special attention. Once your reservation is confirmed, we urge you to call and email your personal Ranch Adventure Consultant, who will help you create a once-in-a-lifetime Ranch Adventure. Managing your visit to the ranch online or by telephone will facilitate fast and accurate communication, and allow you to provide us with pertinent details we require in order to complete your reservation. We will require a current photo for your security card (which we are happy to take when you arrive.)

Travel Protection Plan:

We recommend that you take advantage of a Travel Protection Plan that offers comprehensive coverage to protect you from cancellation fees, costs incurred due to trip delays/interruption, damaged or lost luggage, medical assistance, and evacuation during your travels.

Vaping/Smoking Policy:

Only allowed in 3 outdoor locations and golf course fairways; minimum \$300 cleaning fee for indiscretions.

Pet Policy:

1. Guest dogs are welcome but discouraged due to potential danger from wildlife and goat guardian dogs
2. Pet Fee: \$65 per dog per day; many restrictions – see complete policy online; must be kept in kennel when left alone; \$150+ damage/extra cleaning fee

Liability Release:

All visitors and guests must sign a liability release upon check-in at the ranch, acknowledging the dangers associated with ranch activities and accepting responsibility in the case of accident or injury.

Responsibilities and Other Terms and Conditions:

Among other things, limitations of The Retreat Links & Spa at Silvies Valley Ranch's liability for loss of property, injury, illness or death during your Ranch Adventure will be provided to all guests prior to departure and are also available upon request. By making a reservation for a Ranch Adventure, the guest agrees to all such terms and conditions.

No Tipping Policy/Resort Fee:

Silvies is a no tipping resort. We do charge a 20% resort fee, which covers everything but taxes and retail purchases, including golf carts, WiFi, TV, 2-way radios, spa and health center access and team member service bonuses.

General Notes:

1. Walking is permitted and encouraged at Silvies Links and pull carts and golf carts are provided — the course is at 5,000 ft. elevation, so drink lots of water
2. No carts permitted on McVeigh's Gauntlet and Chief Egan Courses - cart available for handicap use on Chief Egan only
3. Donations for the Goat Caddies support the ONDA wetlands and bird/bat house maintenance (donations not tax deductible)
4. 9.8% state and county occupancy tax is on the room charge only

Deposit & Cancellation Policy:

Individual Reservations (4 or fewer guests):
Deposit of 1 room night deposit required at time of reservation for every 3 room nights reserved; deposit is refundable until 60 days before arrival; inside 60 days of arrival, deposit is refundable only if rooms are re-rented to others.

Group Reservations (over 4 guests w/1 person responsible for deposits):

\$2,500 required at time of reservation to hold rooms; 25% of package fees required at 6 months before event; another 25% of package fees due 120 days before the event; balance of package due 60 days before event. All refundable to the extent rooms and rounds are rebooked and paid for by others. See website for complete details.



For Reservations:

Contact your Ranch Adventure Specialist at: **1-800-SILVIES** (745-8437)

Reservation Hours:

Mon. - Fri. 9 a.m.-6 p.m. PST
Sat. & Sun. 10 a.m.-5 p.m. PST

For Additional information:

Contact us by email at: info@silvies.us
or visit us online at: www.silvies.us



Craddock #3



1-800-SILVIES | WWW.SILVIES.US
(745-8437)

f @SilviesSimplyAmazing

@SilviesSimplyAmazing

@SilviesRetreat

